



Vax Ltd., Kingswood Road, Hampton Lovett, Droitwich, Worcestershire, WR9 0QH, UK
email: info@vax.co.uk - website: vax.co.uk

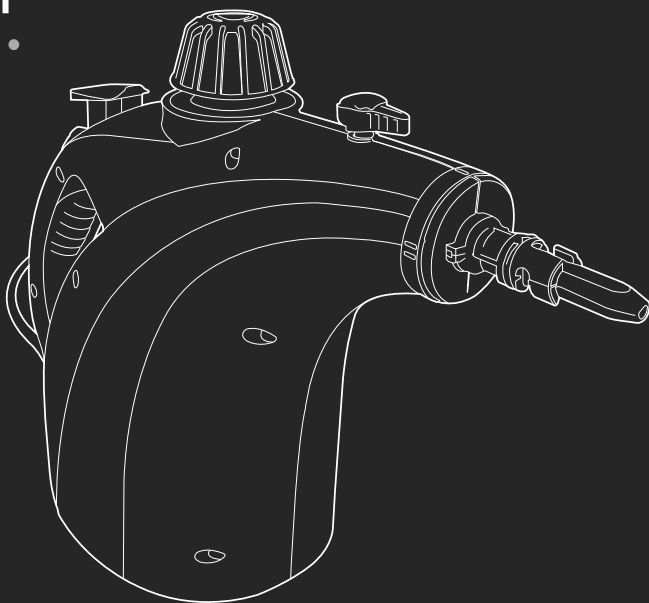


User Guide

Vax Careline: (UK) 0844 412 8455
(ROI) 1-800 928 308

Steam cleaner

steam grime master



Get cleaning...

What's your Vax model number? (Located on the flap of the packaging)

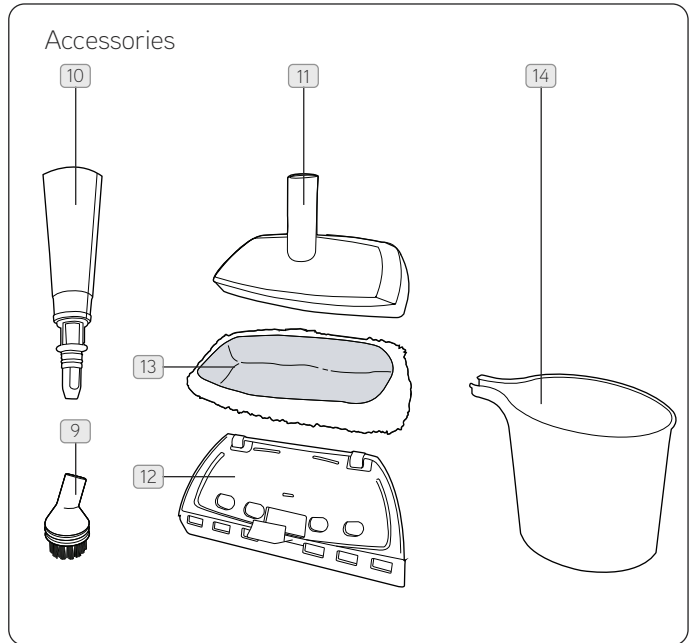
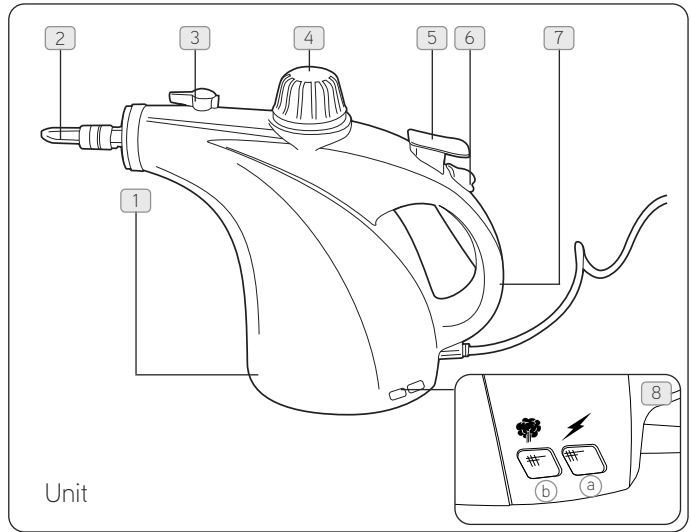
e.g. S4

What's your serial number? (Located on the base of the machine)

Note these down in case you need them in future. Please keep instructions for further use.

Machine Overview

- 1 Water tank
- 2 Nozzle
- 3 Variable steam dial
- 4 Water tank lid
- 5 Steam trigger
- 6 Steam trigger safety latch
- 7 Carry handle
- 8 LED indicator
 - a) Water heating/power on
(red LED)
 - b) Steam ready
(red LED) + (green LED)
- 9 Small brush
- 10 Concentration nozzle
- 11 Upholstery/clothes tool
- 12 Squeegee tool
- 13 Upholstery/clothes cloth x 2
- 14 Measuring jug



General Safety Information

FOR HOUSEHOLD USE ONLY.

When using the steam cleaner, basic safety precautions should always be observed, including the following:

IMPORTANT: Please refer to floor manufacturer's care recommendations before use and test the steam mop on a discrete area of flooring to begin with.



WARNING: The steam cleaner unit and accessories get very hot during operation.

DANGER OF SCALDING: Avoid contact with the steam.

- Do not leave the steam cleaner unattended when plugged in. Unplug it from socket when not in use.
- To prevent electric shock do not use outdoors.
- Not to be used as a toy. Close supervision is necessary when used near children or the infirm.
- Use only as described in this manual.
- Do not use the steam cleaner if it has been dropped, damaged, left outdoors or dropped into water. Do not use the steam cleaner with a damaged cord or plug. If the supply cord is damaged, it must be replaced by the manufacturer or a recommended Service Agent to avoid hazard and invalidating the guarantee.
- Do not pull or carry by the cord, use the cord as a handle, allow the cord to come into contact with hot or sharp surfaces or close a door on the cord.
- Do not unplug by pulling on the cord.
- Do not handle the plug or steam cleaner with wet hands.
- Do not put any objects into openings or operate with openings blocked.
- Do not use without the tank cap in place.
- Turn off all controls before unplugging.
- Keep the steam cleaner on the floor.
- Do not use an extension cord.
- Do not attempt to remove blockages with sharp objects as they may cause damage.
- Store indoors, put away after use to prevent tripping accidents.
- Using improper voltage may result in damage to the steam cleaner and possible injury to the user. The correct voltage is listed on the rating label.
- A hazard may occur if the steam cleaner runs over the power supply cord.
- The steam cleaner must be kept level during operation.
- Never immerse the steam cleaner in water or other liquids.
- Keep the steam cleaner away from rain and moisture. The steam cleaner is not suitable for outdoor use.
- Do not operate the steam cleaner without water in the tank. Always top up with water in good time.
- Empty the water tank when the steamer is not in use.
- Never fill the tank with anything other than water. Never put additives (such as perfume, stain remover or products containing alcohol) in the water as they may damage the steam cleaner or make it dangerous to use.
- Always remove the mains plug from the socket and allow this steam cleaner to cool down completely before topping up with water.
- Do not overfill the tank. Do not exceed the maximum prescribed filling level. Please use the measuring jug included.
- Ensure that the water tank cap has been screwed down fully before use.
- Only carry the steam cleaner by the carry handle.
- Do not touch any hot areas on the steam cleaner. It is normal for the steam cleaner to heat up during operation.
- Do not use the steam cleaner to treat any items of clothing that are still being worn on the body.
- The force and heat of the steam may have an adverse effect on some materials. Always check whether a surface is suitable for treatment with the steam cleaner by carrying out a test beforehand on a concealed area.
- Always include these operating instructions if passing the steam cleaner on to a third party.
- Never aim the steam cleaner at people, animals or plants (risk of scalding)! Do not aim the steam cleaner at electrical systems or wires.
- Please always switch the appliance off and remove the mains plug from the socket if leaving the work area.
- The steam cleaner is fitted with a thermostat and a thermal cut-out as protection against overheating.
- Accessories become hot during use - allow them to cool down before handling.
- Please ensure all parts are correctly fitted before using the product.
- Do not use your steam cleaner if damaged/faulty. Please call our Vax Careline on 0844 412 8455.
- Do not use unit on leather, wax polished furniture or floors, synthetic fabrics, velvet or other delicate steam or water sensitive materials.

NOTE: The liquid or steam must not be directed towards equipment containing electrical components, such as the interior of ovens.

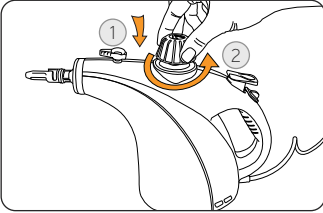
This steamer is for household use only and NOT for commercial or industrial use.

PLEASE KEEP INSTRUCTIONS FOR FURTHER USE.

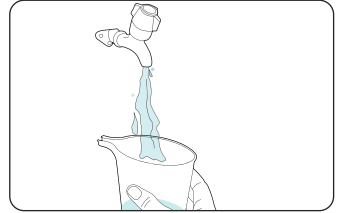
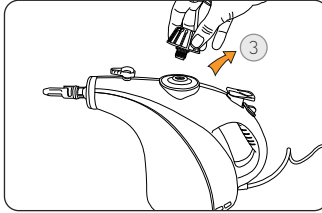
Operation

Operating your steam cleaner

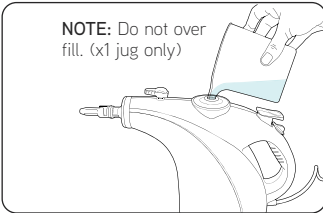
CAUTION: Do not open the water tank lid when using the steamer. Your steamer is pressurised, do not completely remove lid when tank is hot. Fill tank only when cool. **NOTE:** Whilst in use do not recline unit more than 45 degrees.



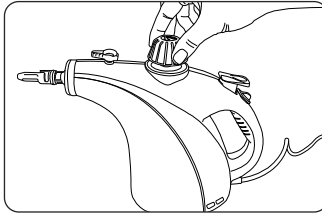
To remove lid push down and twist anti-clockwise.



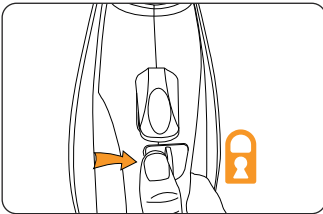
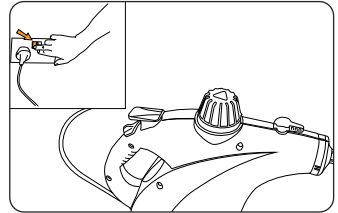
Fill measuring jug with 260ml water.



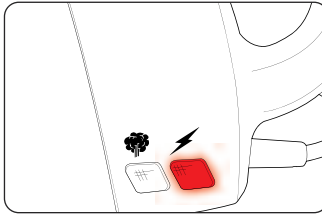
Slowly pour water into water tank..



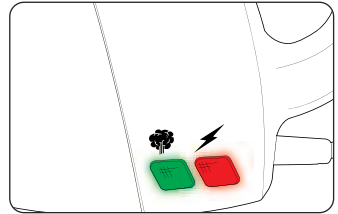
Ensure the lid is securely fastened by pushing down and twisting.



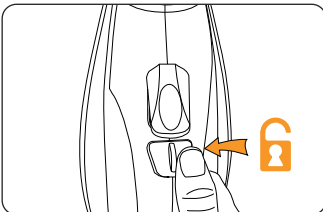
Ensure safety latch is on while the unit is heating.



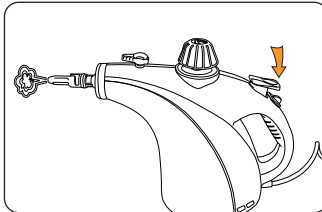
Red LED will illuminate when water is heating and unit is on.



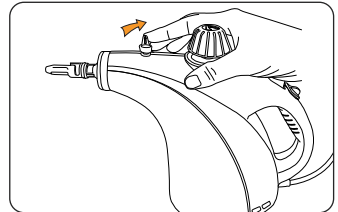
After approximately 2 minutes the Green LED will also illuminate showing steamer is ready to use.



Release safety latch to use steamer.



Press steam trigger to release steam.

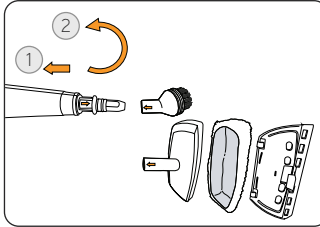
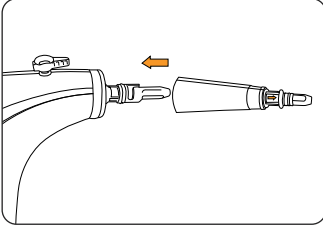


Rotate variable power to adjust steam pressure.

Operation

Accessories

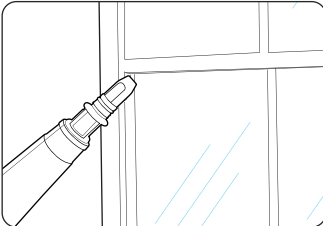
Attaching small tools



- 1 Push small tools onto concentration nozzle aligning arrows.
- 2 Twist clockwise to fit.

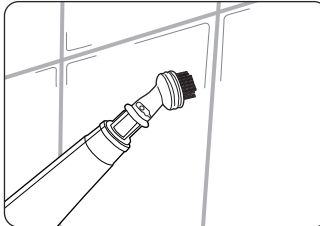
NOTE: Concentration nozzle must be attached before fitting the small tools.

Using the small tools



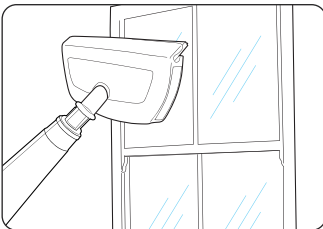
Concentration nozzle

Use to remove soap scum in baths and shower enclosures and to clean heavily soiled areas in kitchens.



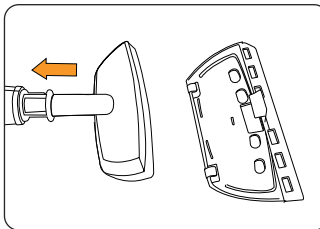
Brush

Ideal for any surface from tiles, sinks, toilets and oven tops.



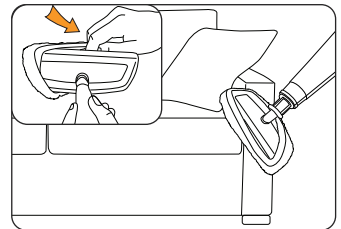
Squeegee tool

Great for leaving your windows, tiles and mirrors gleaming.



Upholstery/clothes tool

Unclip the squeegee tool from the upholstery/clothes tool.



Upholstery/clothes tool

Attach the cloth to the upholstery/clothes tool to efficiently steam upholstery and clothes.

IMPORTANT: Test for colour fastness in a small hidden area of upholstery/fabric to check for colour removal before use.

Maintenance (Keep your Vax as good as new)

Cleaning cloths

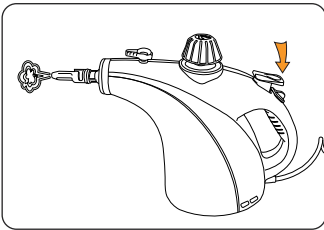
IMPORTANT: Never use bleach or fabric softener when washing the cloths.

- ① Wash by hand or machine washable at 'warm' temperature. Always use a mild detergent.
- ② Allow cloths to completely dry before next use.

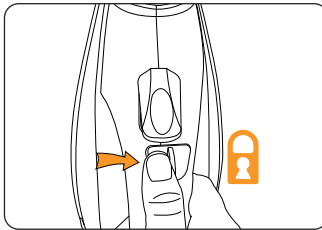
Storage

IMPORTANT: Steam cleaner must have cooled down before storing.

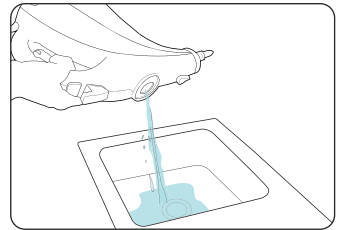
IMPORTANT: To maintain your steam cleaner's performance, turn the unit off at the plug when storing your machine after use and hold steam trigger down to release remaining steam pressure. Ensure the water tank has been fully drained before storing.



Press steam trigger to release steam.



Ensure safety latch is on.



Empty unit of any remaining water.

WARNING: to reduce the risk of personal injury, unplug the steamer and ensure unit has fully cooled down before performing maintenance/troubleshooting checks.

Is there an accessory missing?

- Check the parts overview page in this guide to make sure the part is definitely included with your machine.
- If the part is missing, we're here to help. Simply call us on: **0844 412 8455**

What do I do if the machine/an accessory has become damaged or broken?

- Visit vax.co.uk for spares and parts.
- Please call our Careline to purchase new spares or order a replacement.

What to do if the steam cleaner has no power?

- The unit may not be plugged into an electrical outlet; ensure the plug is pushed in securely.
- Check the mains power is switched on.
- The electrical outlet may not be working; check the fuse or breaker and consult an electrician.
- The power cord may be damaged; if it is it must be replaced by the manufacturer, or a Vax authorised service agent.

Why is the steam cleaner not producing steam?

- Check the mains power is switched on.
- There may be no water in the tank; please refer to the operation section.
- Check that the safety latch has been unlocked on the steam handle.
- Check that the unit has not been overfilled as there must be space in the tank for the water to heat. If overfilled the unit will deliver little steam or water droplets.
- The water may not yet be at temperature; the green and

red steam ready indicator light will both be illuminated when the water is at temperature and is ready to use.

- If the unit is producing a very small amount of steam, check the variable steam power dial and adjust to max.
- If none of the points above are of assistance, we're here to help. Simply call us on: **0844 412 8455**
- When the unit has been switched off and fully cooled remove the water tank lid. If limescale build up can be seen inside the tank the unit will need to be descaled.

What do I do if the steam cleaner takes a long time to heat up?

- When the unit has been switched off and fully cooled remove the water tank lid. If limescale build up can be seen inside the tank the unit will need to be descaled.
- Otherwise, we're here to help. Simply call us on: **0844 412 8455**

we're here if you need us

Instead of taking me back to the shop, simply visit:

vax.co.uk/support
vaxireland.ie

or call:

(UK) 0844 412 8455
(ROI) 1-800 928 308

This does not affect your statutory rights

Other Information

UK Service & Help

Vax Careline:

(UK) 0844 412 8455

(ROI) 1-800 928 308

Monday-Friday 8.30am to 6.30pm

Saturday 9.00am to 5.00pm

Any queries or concerns about using your Vax, call the Vax Careline. Calls are charged at the UK local rate. Please make a note of the serial number and model number of the steam cleaner before calling. For the nearest Service Agent, please call the Vax Careline or visit vax.co.uk

Consumables

To purchase spares and accessories, please visit vax.co.uk

Upholstery cloth kit: 1-9-130146-00

Guarantee will only be valid with the use of genuine Vax spares and accessories.

Technical Specification

Wattage:	1200W
Voltage:	220 - 240V - 50Hz
Water tank capacity:	420ml (usable capacity 260ml)
Weight:	1.3kg
Cord length:	3m

Subject to technical change without notice.

Other Information



EEC Statement of Compliance

Manufacturer/EEC importer: Vax Limited, hereby on our own responsibility, declare that the S4 series is manufactured in compliance with the following Directives:

Safety: 2006/95/EC Low Voltage Directive

EMC: 2004/108/EC Electromagnetic Compatibility Directive



Waste electrical products should not be disposed of with household waste. Please recycle where facilities exist. Check with your Local Authority or retailer for recycling advice.

Notes



